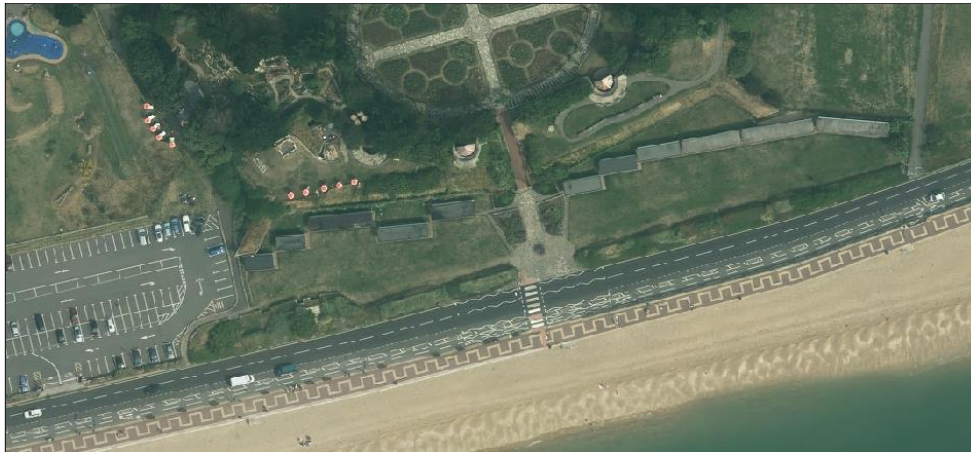
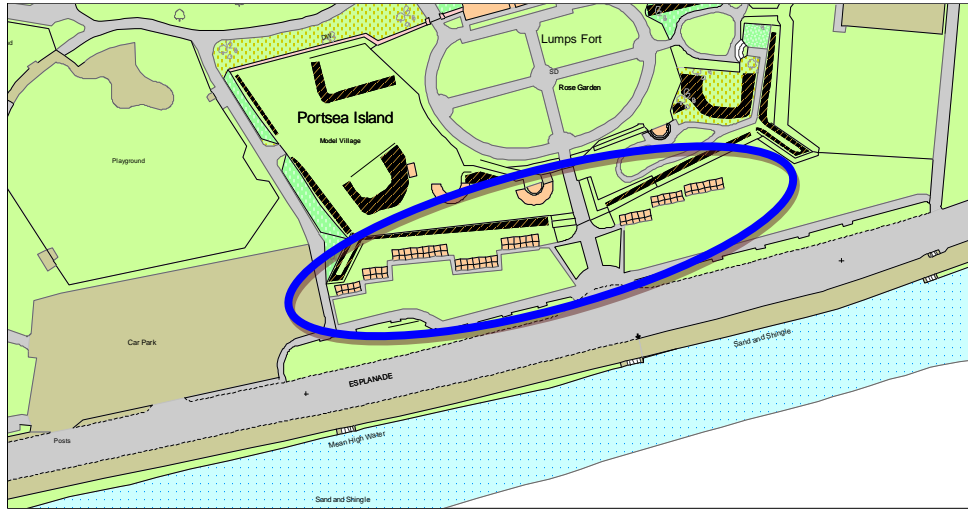


3. Lumps Fort



Current use	Beach huts (78)
Potential capacity	Currently 78 huts arranged in 11 blocks to the east and west of the entrance to Lumps Fort - replacing these could lead to a slight increase or decrease in capacity depending on design. Between 75-85 huts in total
Key constraints	<p>Design of new huts will need to take account of Lumps Fort and any remodelling of entrance.</p> <p>Land is protected open space so any additional huts taking land would need to provide mitigation land or public benefit outweighing the harm caused by loss of POS.</p>
Access	Large surface car park to the west, with footpaths running along the front of all huts.